

Courtesy Of Ricky Singh Of MaxWell Polaris

\$529,900 - 2931 26 Ave, Edmonton

MLS® #E4458572

\$529,900

4 Bedroom, 3.50 Bathroom, 1,662 sqft

Single Family on 0.00 Acres

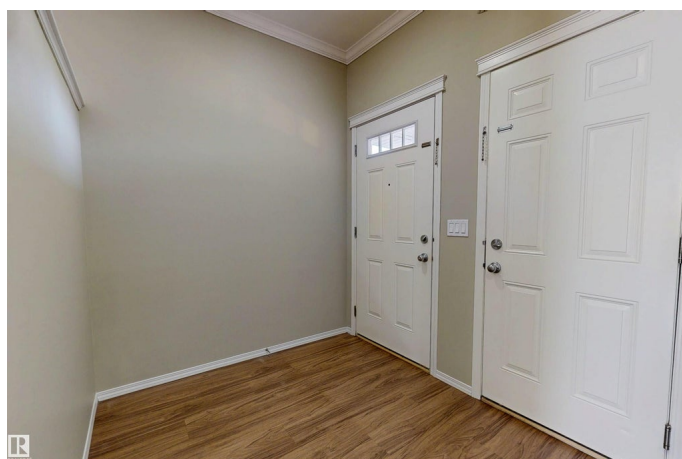
Silver Berry, Edmonton, AB

Welcome to this beautiful 2-storey home in the desirable community of Silverberry offering 4 bedrooms, 3.5 baths, a double attached garage, and a SEPARATE ENTRANCE with a SECOND KITCHEN. The main floor features a bright living room with an electric fireplace, modern kitchen with large island & breakfast nook, access to a custom-built deck, laundry, and a 2-pc bath. Upstairs youâ€™™ll find 3 spacious bedrooms, 2 full baths including ensuite, plus a bonus room. The fully finished basement is ideal for extended family with another bedroom, full bath, huge rec room, and second kitchen. The backyard is fully landscaped & fenced with a custom deck for entertaining. Recent upgrades include Dishwasher (2025), HWT (2023), Central A/C (2022), extended driveway, and laminate flooring upstairs. Close to schools, parks, public transit, Whitemud Freeway & all amenitiesâ€™™this home has it all!

Built in 2010

Essential Information

MLS® #	E4458572
Price	\$529,900
Bedrooms	4
Bathrooms	3.50
Full Baths	3



Half Baths	1
Square Footage	1,662
Acres	0.00
Year Built	2010
Type	Single Family
Sub-Type	Detached Single Family
Style	2 Storey
Status	Active

Community Information

Address	2931 26 Ave
Area	Edmonton
Subdivision	Silver Berry
City	Edmonton
County	ALBERTA
Province	AB
Postal Code	T6T 0H6

Amenities

Amenities	Air Conditioner, Deck
Parking	Double Garage Attached

Interior

Interior Features	ensuite bathroom
Appliances	Air Conditioning-Central, Dishwasher-Built-In, Dryer, Hood Fan, Washer, Window Coverings, Refrigerators-Two, Stoves-Two
Heating	Forced Air-1, Natural Gas
Fireplace	Yes
Fireplaces	See Remarks
Stories	3
Has Basement	Yes
Basement	Full, Finished

Exterior

Exterior	Wood, Vinyl
Exterior Features	Fenced, Landscaped, Playground Nearby, Public Transportation, Schools, Shopping Nearby
Roof	Asphalt Shingles
Construction	Wood, Vinyl

Foundation Concrete Perimeter

Additional Information

Date Listed September 19th, 2025

Days on Market 1

Zoning Zone 30

DATA IS DEEMED RELIABLE BUT IS NOT GUARANTEED ACCURATE BY THE REALTORS® ASSOCIATION OF EDMONTON. COPYRIGHT 2025 BY THE REALTORS® ASSOCIATION OF EDMONTON. ALL RIGHTS RESERVED.Trademarks are owned or controlled by the Canadian Real Estate Association (CREA) and identify real estate professionals who are members of CREA (REALTOR®, REALTORS®) and/or the quality of services they provide (MLS®, Multiple Listing Service®)

Listing information last updated on September 20th, 2025 at 1:17pm MDT