

Courtesy Of Kristy D Tillapaugh Of Century 21 Masters

# \$434,900 - 11716 148 Avenue, Edmonton

MLS® #E4457077

**\$434,900**

5 Bedroom, 3.00 Bathroom, 1,507 sqft  
Single Family on 0.00 Acres

Caernarvon, Edmonton, AB

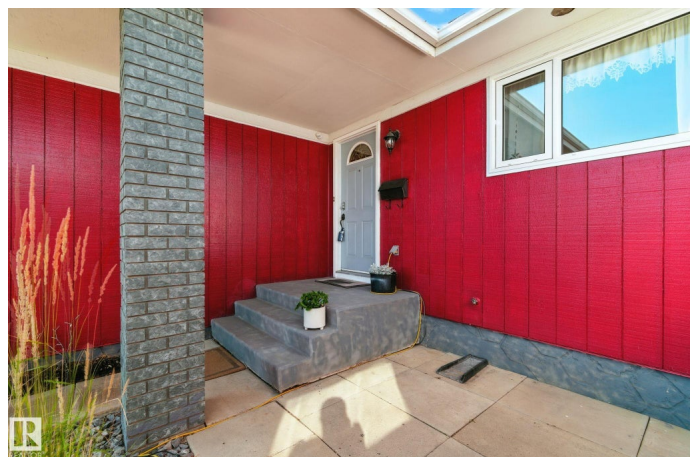
Tucked away in a quiet cul-de-sac and backing onto a trail to parks and schools, this large single-family bungalow offers the perfect blend of space, comfort, and privacy. With 5 bedrooms plus a craft room and cold storage, this home provides plenty of room for a growing family or multi-generational living. The main floor boasts a unique, spacious layout featuring two living rooms, a sunroom overlooking the beautifully landscaped backyard, and a huge open-concept kitchen ideal for entertaining. Two fireplaces add warmth and charm, while the primary suite includes a private ensuite for your retreat. The fully finished basement offers even more living space, perfect for a home theatre, gym, or guest accommodations. Updates include a newer roof, furnace, hot water tank, appliances, and gleaming hardwood floors. Comfort is enhanced year-round with central air conditioning. Outside, enjoy a lush, private yard with mature landscaping that backs directly onto a walking trail — your own peaceful escape right at home.

Built in 1973

## Essential Information

MLS® # E4457077

Price \$434,900



Bedrooms	5
Bathrooms	3.00
Full Baths	3
Square Footage	1,507
Acres	0.00
Year Built	1973
Type	Single Family
Sub-Type	Detached Single Family
Style	Bungalow
Status	Active

### **Community Information**

Address	11716 148 Avenue
Area	Edmonton
Subdivision	Caernarvon
City	Edmonton
County	ALBERTA
Province	AB
Postal Code	T5X 1B6

### **Amenities**

Amenities	Deck, Sunroom
Parking	Over Sized, Single Garage Attached

### **Interior**

Interior Features	ensuite bathroom
Appliances	Dishwasher-Built-In, Dryer, Refrigerator, Storage Shed, Stove-Electric, Vacuum Systems, Washer, Window Coverings
Heating	Forced Air-1, Natural Gas
Fireplace	Yes
Fireplaces	Brick Facing
Stories	2
Has Basement	Yes
Basement	Full, Finished

### **Exterior**

Exterior	Wood, Brick, Stucco
Exterior Features	Backs Onto Park/Trees, Cul-De-Sac, Landscaped, Playground Nearby, Public Transportation, Schools, Shopping Nearby

Roof	Asphalt Shingles
Construction	Wood, Brick, Stucco
Foundation	Concrete Perimeter

### **School Information**

Elementary	Caernarvon school
Middle	St. Edmund Catholic School
High	Archbishop O'Leary School

### **Additional Information**

Date Listed	September 10th, 2025
Days on Market	65
Zoning	Zone 27

DATA IS DEEMED RELIABLE BUT IS NOT GUARANTEED ACCURATE BY THE REALTORS® ASSOCIATION OF EDMONTON. COPYRIGHT 2025 BY THE REALTORS® ASSOCIATION OF EDMONTON. ALL RIGHTS RESERVED. Trademarks are owned or controlled by the Canadian Real Estate Association (CREA) and identify real estate professionals who are members of CREA (REALTOR®, REALTORS®) and/or the quality of services they provide (MLS®, Multiple Listing Service®)

Listing information last updated on November 14th, 2025 at 1:17pm MST