

\$398,900 - 124 Tribute Common, Spruce Grove

MLS® #E4456890

\$398,900

3 Bedroom, 3.50 Bathroom, 1,470 sqft

Single Family on 0.00 Acres

Tonewood, Spruce Grove, AB

Welcome to your next chapter in the heart of Tonewood—a vibrant, family-approved neighborhood with quick access to Jubilee Park, exciting upcoming amenities, and major commuter routes! This 1450+ sq ft half duplex offers a functional layout tailored for modern living. Step into a warm and inviting main floor featuring rich, stylish flooring that sets the tone for cozy evenings and lively gatherings. With 9 ft ceilings and an abundance of natural light, the space feels open and welcoming. The kitchen is a true highlight, boasting sleek stainless steel appliances and a seamless flow into the dining and living areas. A convenient 2-piece bath and single attached garage add everyday ease. Upstairs, enjoy a versatile bonus room and three spacious bedrooms, including a serene primary retreat with a walk-in closet and full ensuite. The basement includes a full bathroom and plenty of room for your future vision. Tucked into a quiet cul-de-sac, this home blends comfort, convenience, and community.

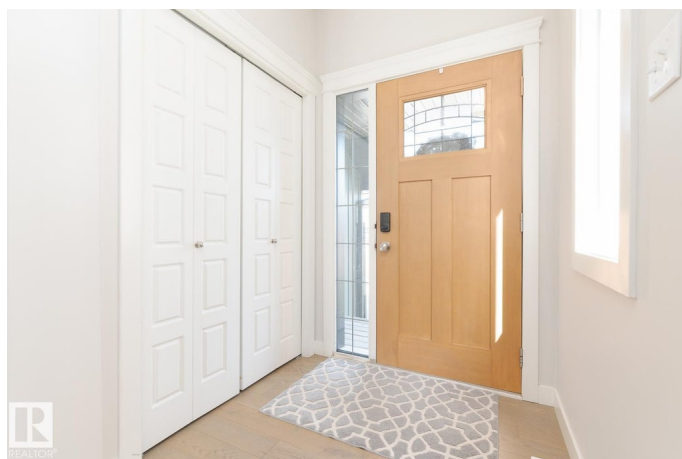
Built in 2017

Essential Information

MLS® # E4456890

Price \$398,900

Bedrooms 3



Bathrooms	3.50
Full Baths	3
Half Baths	1
Square Footage	1,470
Acres	0.00
Year Built	2017
Type	Single Family
Sub-Type	Half Duplex
Style	2 Storey
Status	Active

Community Information

Address	124 Tribute Common
Area	Spruce Grove
Subdivision	Tonewood
City	Spruce Grove
County	ALBERTA
Province	AB
Postal Code	T7X 0W6

Amenities

Amenities	Ceiling 9 ft., Deck
Parking Spaces	2
Parking	Single Garage Attached

Interior

Interior Features	ensuite bathroom
Appliances	Dishwasher-Built-In, Dryer, Garage Control, Garage Opener, Microwave Hood Fan, Refrigerator, Stove-Electric, Washer, Window Coverings
Heating	Forced Air-1, Natural Gas
Fireplace	Yes
Fireplaces	Tile Surround
Stories	2
Has Basement	Yes
Basement	Full, Unfinished

Exterior

Exterior	Wood, Vinyl
Exterior Features	Cul-De-Sac, No Back Lane, No Through Road, Partially Fenced

Roof	Asphalt Shingles
Construction	Wood, Vinyl
Foundation	Concrete Perimeter

Additional Information

Date Listed	September 9th, 2025
Days on Market	10
Zoning	Zone 91

DATA IS DEEMED RELIABLE BUT IS NOT GUARANTEED ACCURATE BY THE REALTORS® ASSOCIATION OF EDMONTON. COPYRIGHT 2025 BY THE REALTORS® ASSOCIATION OF EDMONTON. ALL RIGHTS RESERVED.Trademarks are owned or controlled by the Canadian Real Estate Association (CREA) and identify real estate professionals who are members of CREA (REALTOR®, REALTORS®) and/or the quality of services they provide (MLS®, Multiple Listing Service®)

Listing information last updated on September 19th, 2025 at 9:32am MDT