

## \$454,250 - 2731 193 Street, Edmonton

MLS® #E4455004

### \$454,250

3 Bedroom, 2.50 Bathroom, 1,288 sqft  
Single Family on 0.00 Acres

The Uplands, Edmonton, AB

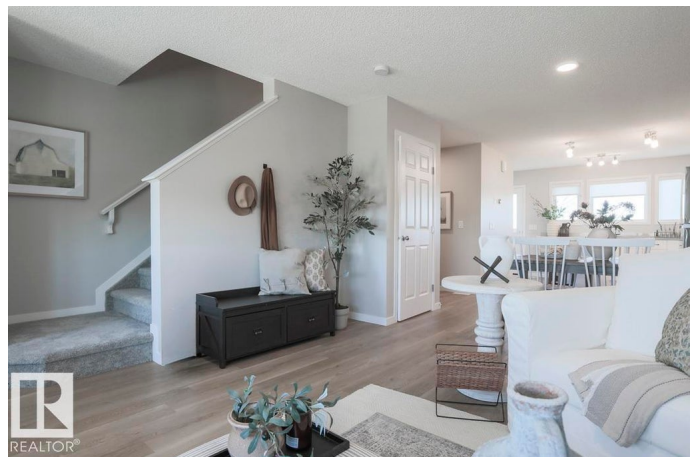
Weâ€™re thrilled to present the Star Modelâ€”a blend of elegance & efficiency designed for modern living. LVP flooring spans the main floor, creating a warm welcome from the moment you step in. The foyer offers a spacious walk-in coat closet & opens to a cozy great room, brightened by a large front window. Flowing seamlessly into the dining area & kitchen, this space is ideal for everyday life. The U-shaped kitchen features a peninsula with eating ledge, Silgranit undermount sink, OTR microwave, and plentiful Thermofoil cabinets with soft-close doors, plus a roomy pantry. Toward the rear, youâ€™ll find another closet and a convenient half bath. A parking pad is included, with an optional detached double garage. Upstairs, the primary suite shines with a walk-in closet and 3-piece ensuite with tub/shower. Two additional bedrooms, a main 3-piece bath, and laundry closet complete the level. Brushed nickel fixtures, separate side entrance, basement rough-in, and Sterlingâ€™s Signature Specification are all included.

Built in 2025

### Essential Information

MLS® # E4455004

Price \$454,250



Bedrooms	3
Bathrooms	2.50
Full Baths	2
Half Baths	1
Square Footage	1,288
Acres	0.00
Year Built	2025
Type	Single Family
Sub-Type	Detached Single Family
Style	2 Storey
Status	Active

### **Community Information**

Address	2731 193 Street
Area	Edmonton
Subdivision	The Uplands
City	Edmonton
County	ALBERTA
Province	AB
Postal Code	T6M 3B2

### **Amenities**

Amenities	Ceiling 9 ft., Detectors Smoke, No Animal Home, No Smoking Home, Smart/Program. Thermostat, Television Connection, 9 ft. Basement Ceiling
Parking	Parking Pad Cement/Paved, Rear Drive Access

### **Interior**

Interior Features	ensuite bathroom
Appliances	None
Heating	Forced Air-1, Natural Gas
Stories	2
Has Basement	Yes
Basement	Full, Unfinished

### **Exterior**

Exterior	Wood, Vinyl
Exterior Features	Back Lane, No Through Road, Playground Nearby, Public Transportation, Schools, Shopping Nearby

Roof	Asphalt Shingles
Construction	Wood, Vinyl
Foundation	Concrete Perimeter

### **Additional Information**

Date Listed August 28th, 2025

Days on Market 21

Zoning Zone 57

DATA IS DEEMED RELIABLE BUT IS NOT GUARANTEED ACCURATE BY THE REALTORS® ASSOCIATION OF EDMONTON. COPYRIGHT 2025 BY THE REALTORS® ASSOCIATION OF EDMONTON. ALL RIGHTS RESERVED. Trademarks are owned or controlled by the Canadian Real Estate Association (CREA) and identify real estate professionals who are members of CREA (REALTOR®, REALTORS®) and/or the quality of services they provide (MLS®, Multiple Listing Service®)

Listing information last updated on September 18th, 2025 at 7:32pm MDT