

\$749,900 - 198 Redwing Wynd, St. Albert

MLS® #E4442640

\$749,900

3 Bedroom, 2.50 Bathroom, 2,259 sqft
Single Family on 0.00 Acres

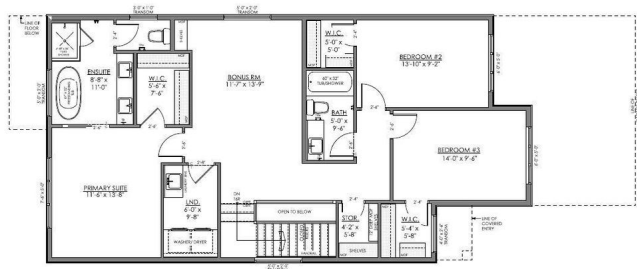
Riverside (St. Albert), St. Albert, AB

The Rose of Riverside, built by award-winning UrbanAge Homes Inc., is a stunning 2259 sq ft. two-storey w/southwest facing backyard loaded with premium upgrades that blend style and functionality. Highlights include various upgrades throughout the kitchen – an entertainer’s dream! Quartz backsplashes elevate the bathrooms, while the ensuite features an upgraded gold plumbing package. The powder room is enhanced with a designer faucet and upgraded mirror. Additional thoughtful touches include 8” interior and exterior doors on the main floor, upgraded railings, and designer tile mudroom floor. A reed glass door adds charm to the den, and a custom plaster fireplace detail creates a beautiful focal point in the living space. Quality craftsmanship meets elevated design throughout. Nestled in Riverside, one of the city’s fastest-growing communities – surrounded by lush forest, scenic walking trails, and natural beauty!!

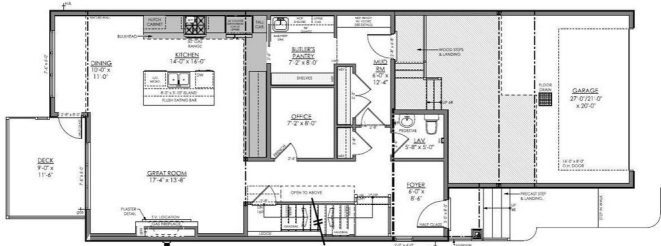
Built in 2025

Essential Information

MLS® #	E4442640
Price	\$749,900
Bedrooms	3
Bathrooms	2.50



198 REDWING WYND
SECOND FLOOR AREA-1213 SQ.F.T
BLACKLINE DRAWINGS ARE FOR MARKETING PURPOSES ONLY



198 REDWING WYND
MAIN FLOOR AREA-1047 SQ.FT.
BLACKLINE DRAWINGS ARE FOR MARKETING PURPOSES ONLY

Full Baths	2
Half Baths	1
Square Footage	2,259
Acres	0.00
Year Built	2025
Type	Single Family
Sub-Type	Detached Single Family
Style	2 Storey
Status	Active

Community Information

Address	198 Redwing Wynd
Area	St. Albert
Subdivision	Riverside (St. Albert)
City	St. Albert
County	ALBERTA
Province	AB
Postal Code	T8N 7X4

Amenities

Amenities	Carbon Monoxide Detectors, Deck, Exterior Walls- 2"x6", Hot Water Tankless, Vinyl Windows, HRV System
Parking	Double Garage Attached

Interior

Interior Features	ensuite bathroom
Appliances	Dishwasher-Built-In, Dryer, Garage Control, Garage Opener, Hood Fan, Oven-Microwave, Refrigerator, Stove-Electric, Washer
Heating	Forced Air-1, Natural Gas
Fireplace	Yes
Fireplaces	Wall Mount
Stories	2
Has Basement	Yes
Basement	Full, Unfinished

Exterior

Exterior	Wood, Stone, Vinyl, Hardie Board Siding
Exterior Features	No Back Lane, Playground Nearby, Public Transportation, Schools, Shopping Nearby

Roof	Asphalt Shingles
Construction	Wood, Stone, Vinyl, Hardie Board Siding
Foundation	Concrete Perimeter

School Information

Elementary	RHarve/BKennedy
Middle	WDCuts/VMaloney
High	Bellerose/ESecondaire

Additional Information

Date Listed	June 16th, 2025
Days on Market	12
Zoning	Zone 24

DATA IS DEEMED RELIABLE BUT IS NOT GUARANTEED ACCURATE BY THE REALTORS® ASSOCIATION OF EDMONTON. COPYRIGHT 2025 BY THE REALTORS® ASSOCIATION OF EDMONTON. ALL RIGHTS RESERVED. Trademarks are owned or controlled by the Canadian Real Estate Association (CREA) and identify real estate professionals who are members of CREA (REALTOR®, REALTORS®) and/or the quality of services they provide (MLS®, Multiple Listing Service®)

Listing information last updated on June 28th, 2025 at 2:17am MDT