

\$610,000 - 20545 92a Avenue, Edmonton

MLS® #E4442450

\$610,000

3 Bedroom, 2.50 Bathroom, 1,390 sqft

Single Family on 0.00 Acres

Suder Greens, Edmonton, AB

Location, comfort and style! Welcome to your forever home. Situated in an adult community within the Lewis Estates Golf Course, offering scenic views, this is a single-family home with HOA support for lawn care and snow removal. This has a very large lot with landscaping, huge deck with automated awning and double garage. Inside there's almost 1400 sq ft of exceptionally maintained, high quality construction and design. On the main floor you'll experience a large great room with vaulted ceilings, a chefs kitchen with island and pantry, cozy fireplace and a spacious dining area with room for all your pieces. The primary bedroom features a wonderful ensuite and walk-in closet. There's a 2nd bedroom/den and 1/2 bath along with main floor laundry. Downstairs in the large family room is a 2ND fireplace. Host company in the spare bedroom with a cheater door to the full basement bath. There's a craft room, wine making room and cold room. Easy access to the Whitemud, Anthony Henday and shopping!

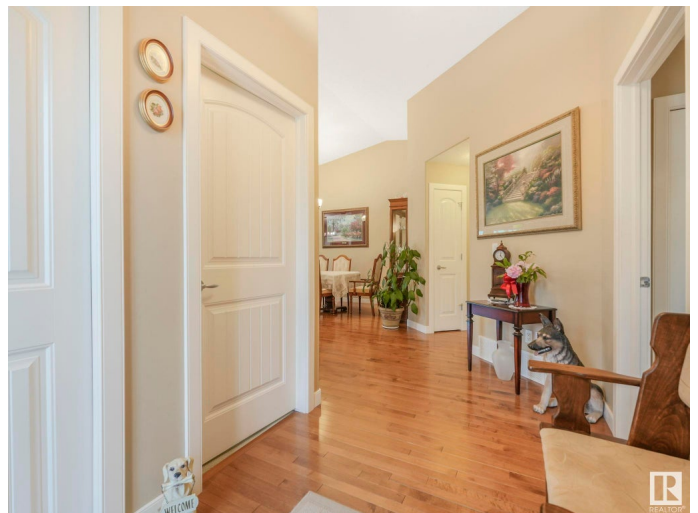
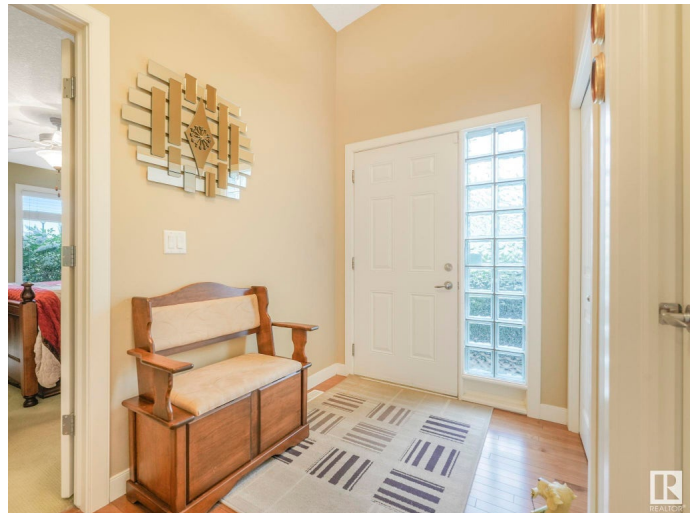
Built in 2008

Essential Information

MLS® # E4442450

Price \$610,000

Bedrooms 3



Bathrooms	2.50
Full Baths	2
Half Baths	1
Square Footage	1,390
Acres	0.00
Year Built	2008
Type	Single Family
Sub-Type	Residential Attached
Style	Bungalow
Status	Active

Community Information

Address	20545 92a Avenue
Area	Edmonton
Subdivision	Suder Greens
City	Edmonton
County	ALBERTA
Province	AB
Postal Code	T5T 3B2

Amenities

Amenities	Closet Organizers, Deck, Detectors Smoke, No Animal Home, No Smoking Home, Patio, Smart/Program. Thermostat, Vaulted Ceiling
Parking Spaces	4
Parking	Double Garage Attached

Interior

Interior Features	ensuite bathroom
Appliances	Dishwasher-Built-In, Dryer, Garage Opener, Microwave Hood Fan, Refrigerator, Stove-Electric, Vacuum System Attachments, Vacuum Systems, Washer, Window Coverings
Heating	Forced Air-1, Natural Gas
Fireplace	Yes
Fireplaces	Mantel
Stories	2
Has Basement	Yes
Basement	Full, Finished

Exterior

Exterior	Wood, Vinyl
Exterior Features	Backs Onto Park/Trees, Cul-De-Sac, Fruit Trees/Shrubs, Golf Nearby, Landscaped, No Back Lane, Park/Reserve, Ravine View, Shopping Nearby, Partially Fenced
Roof	Asphalt Shingles
Construction	Wood, Vinyl
Foundation	Concrete Perimeter

Additional Information

Date Listed	June 14th, 2025
Days on Market	2
Zoning	Zone 58
HOA Fees	90
HOA Fees Freq.	Monthly

DATA IS DEEMED RELIABLE BUT IS NOT GUARANTEED ACCURATE BY THE REALTORS® ASSOCIATION OF EDMONTON. COPYRIGHT 2025 BY THE REALTORS® ASSOCIATION OF EDMONTON. ALL RIGHTS RESERVED. Trademarks are owned or controlled by the Canadian Real Estate Association (CREA) and identify real estate professionals who are members of CREA (REALTOR®, REALTORS®) and/or the quality of services they provide (MLS®, Multiple Listing Service®)

Listing information last updated on June 16th, 2025 at 4:32am MDT