

\$799,000 - 572 Butterworth Way, Edmonton

MLS® #E4440411

\$799,000

7 Bedroom, 4.50 Bathroom, 2,767 sqft

Single Family on 0.00 Acres

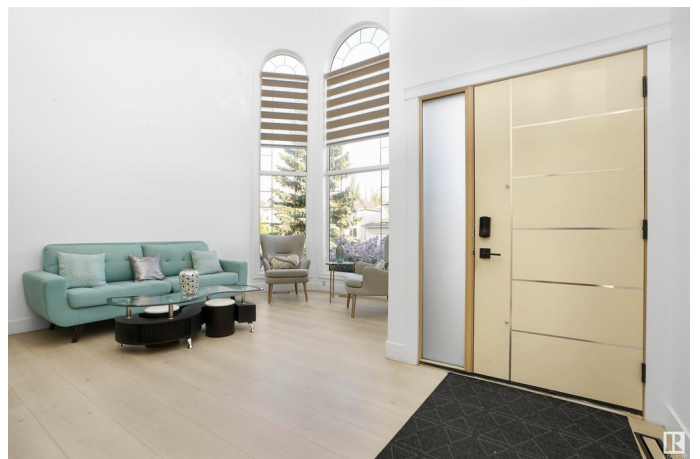
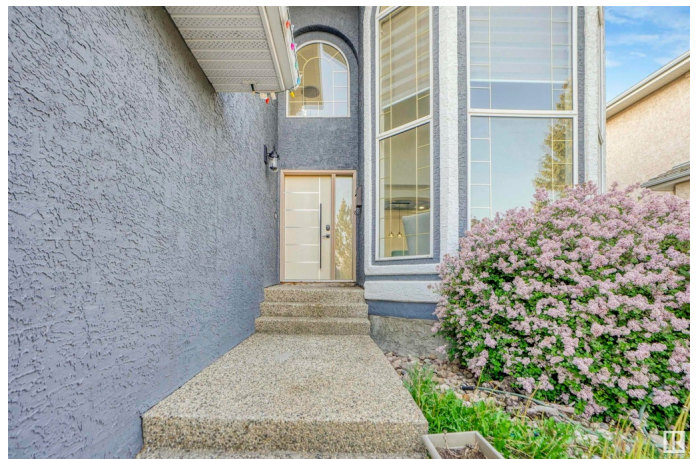
Bulyea Heights, Edmonton, AB

Step into this beautifully renovated 7-bed, 4.5-bath home backing onto Snow Valley Ski Hill. The grand foyer welcomes you with soaring open-to-above ceilings and motorized blinds, leading into a formal dining area. A cozy gas fireplace anchors the family living room, which flows seamlessly into a bright breakfast nook and chef's kitchen featuring smart appliances and elegant finishes. The main floor includes a private bedroom, while the upper level offers four spacious bedrooms—one with stunning views of the ski club and downtown, plus a spa-like ensuite with a jet tub. The fully finished basement adds two more bedrooms and a second living area. Thoughtfully designed with premium systems—including 2 furnaces, 2 A/C units, dual thermostats, and a heated garage—this home offers comfort, efficiency, and style in every season.

Built in 1998

Essential Information

MLS® #	E4440411
Price	\$799,000
Bedrooms	7
Bathrooms	4.50
Full Baths	4
Half Baths	1



Square Footage	2,767
Acres	0.00
Year Built	1998
Type	Single Family
Sub-Type	Detached Single Family
Style	2 Storey
Status	Active

Community Information

Address	572 Butterworth Way
Area	Edmonton
Subdivision	Bulyea Heights
City	Edmonton
County	ALBERTA
Province	AB
Postal Code	T6R 2P6

Amenities

Amenities	Off Street Parking, Air Conditioner, Carbon Monoxide Detectors, Ceiling 9 ft., Deck, Detectors Smoke, Hot Water Tankless, Low Flw/Dual Flush Toilet, No Animal Home, No Smoking Home, Patio, Smart/Program. Thermostat, Wet Bar, Natural Gas BBQ Hookup, 9 ft. Basement Ceiling
Parking	Double Garage Attached

Interior

Interior Features	ensuite bathroom
Appliances	Air Conditioning-Central, Dishwasher-Built-In, Dryer, Oven-Built-In, Oven-Microwave, Stove-Gas, Washer, Wine/Beverage Cooler, Refrigerators-Two
Heating	Forced Air-2, Natural Gas
Stories	3
Has Basement	Yes
Basement	Full, Finished

Exterior

Exterior	Wood, Stucco
Exterior Features	Backs Onto Park/Trees, Landscaped, Ravine View, River Valley View, Schools, Shopping Nearby, Ski Hill Nearby, View Downtown, Partially Fenced
Roof	Cedar Shakes

Construction	Wood, Stucco
Foundation	Concrete Perimeter

Additional Information

Date Listed	June 5th, 2025
Days on Market	11
Zoning	Zone 14

DATA IS DEEMED RELIABLE BUT IS NOT GUARANTEED ACCURATE BY THE REALTORS® ASSOCIATION OF EDMONTON. COPYRIGHT 2025 BY THE REALTORS® ASSOCIATION OF EDMONTON. ALL RIGHTS RESERVED.Trademarks are owned or controlled by the Canadian Real Estate Association (CREA) and identify real estate professionals who are members of CREA (REALTOR®, REALTORS®) and/or the quality of services they provide (MLS®, Multiple Listing Service®)

Listing information last updated on June 16th, 2025 at 6:17pm MDT