

\$579,900 - 908 Chahley Crescent, Edmonton

MLS® #E4439157

\$579,900

2 Bedroom, 2.00 Bathroom, 1,533 sqft

Single Family on 0.00 Acres

Cameron Heights (Edmonton), Edmonton, AB

Immaculately maintained bungalow in sought-after Cameron Heights! Enjoy 9' ceilings, new central A/C, refinished hardwood floors, and a bright, open layout. The kitchen has a huge island for entertaining, a corner pantry for extra storage, and great workspace with all the extra cabinetry. It features granite counters, stainless steel appliances including a gas range, and a new fridge. The main floor offers 2 spacious bedrooms, with room for 2 more in the unfinished basement. The primary is huge with a luxurious en-suite washroom with dual sinks, an oversized tub & shower. The walk in closet was redone by California Closets (\$7K+) to add smart storage. Steps to your main floor laundry room & entry from your oversized double attached garage (23'6"x20'11") that has a new heater & an 8'™ high door. Entertain on the stunning new full-width composite deck with aluminum railings and natural gas hookups for your BBQ or fire table. Steps to walking trails and minutes from Windermere amenities!

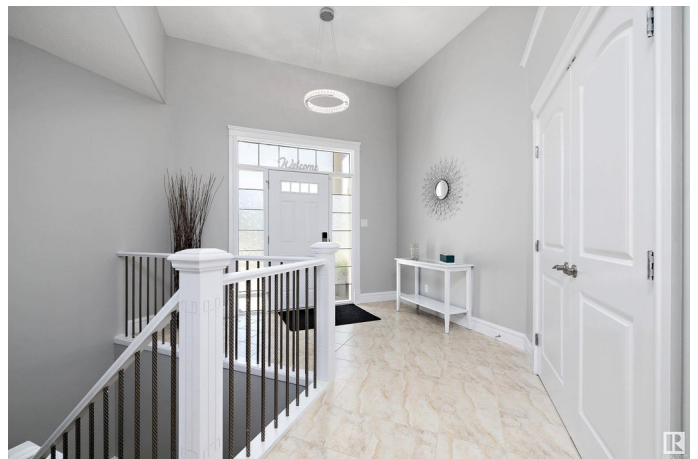
Built in 2011

Essential Information

MLS® # E4439157

Price \$579,900

Bedrooms 2



Bathrooms	2.00
Full Baths	2
Square Footage	1,533
Acres	0.00
Year Built	2011
Type	Single Family
Sub-Type	Detached Single Family
Style	Bungalow
Status	Active

Community Information

Address	908 Chahley Crescent
Area	Edmonton
Subdivision	Cameron Heights (Edmonton)
City	Edmonton
County	ALBERTA
Province	AB
Postal Code	T6M 0C7

Amenities

Amenities	Ceiling 9 ft., Deck, No Animal Home, No Smoking Home, Storage-In-Suite, 9 ft. Basement Ceiling
Parking Spaces	4
Parking	Double Garage Attached

Interior

Interior Features	ensuite bathroom
Appliances	Air Conditioning-Central, Dishwasher-Built-In, Dryer, Garage Control, Garage Opener, Microwave Hood Fan, Refrigerator, Storage Shed, Stove-Gas, Washer, Window Coverings, See Remarks, Garage Heater
Heating	Forced Air-1, Natural Gas
Fireplace	Yes
Fireplaces	Stone Facing
Stories	1
Has Basement	Yes
Basement	Full, Unfinished

Exterior

Exterior	Wood, Brick, Vinyl
----------	--------------------

Exterior Features	Fenced, Landscaped, Low Maintenance Landscape, Public Transportation, Schools, Shopping Nearby
Roof	Asphalt Shingles
Construction	Wood, Brick, Vinyl
Foundation	Concrete Perimeter

School Information

Elementary	Michael Kostek
Middle	S. Bruce Smith
High	Jasper Place School

Additional Information

Date Listed	May 29th, 2025
Days on Market	19
Zoning	Zone 20
HOA Fees	240
HOA Fees Freq.	Annually

DATA IS DEEMED RELIABLE BUT IS NOT GUARANTEED ACCURATE BY THE REALTORS® ASSOCIATION OF EDMONTON. COPYRIGHT 2025 BY THE REALTORS® ASSOCIATION OF EDMONTON. ALL RIGHTS RESERVED.Trademarks are owned or controlled by the Canadian Real Estate Association (CREA) and identify real estate professionals who are members of CREA (REALTOR®, REALTORS®) and/or the quality of services they provide (MLS®, Multiple Listing Service®)

Listing information last updated on June 17th, 2025 at 7:17pm MDT