

\$215,000 - 223 5816 Mullen Place, Edmonton

\$215,000

MacTaggart, Edmonton, AB

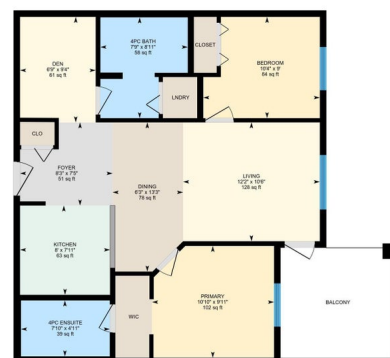
Built in 2016

Essential Information

A photograph of the MacTaggart Ridge Gate townhome complex. In the foreground, a stone sign with a diamond-shaped logo contains the text "MACTAGGART RIDGE GATE" and "530A, 530B, 531A, 531B, 531C, 531D, 531E, 531F, 531G, 531H, 531I, 531J, 531K, 531L, 531M, 531N, 531O, 531P, 531Q, 531R, 531S, 531T, 531U, 531V, 531W, 531X, 531Y, 531Z, 531AA, 531AB, 531AC, 531AD, 531AE, 531AF, 531AG, 531AH, 531AI, 531AJ, 531AK, 531AL, 531AM, 531AN, 531AO, 531AP, 531AQ, 531AR, 531AS, 531AT, 531AU, 531AV, 531AW, 531AX, 531AY, 531AZ, 531BA, 531BB, 531BC, 531BD, 531BE, 531BF, 531BG, 531BH, 531BI, 531BJ, 531BK, 531BL, 531BM, 531BN, 531BO, 531BP, 531BQ, 531BR, 531BS, 531BT, 531BU, 531BV, 531BW, 531BX, 531BY, 531BZ, 531CA, 531CB, 531CC, 531CD, 531CE, 531CF, 531CG, 531CH, 531CI, 531CJ, 531CK, 531CL, 531CM, 531CN, 531CO, 531CP, 531CQ, 531CR, 531CS, 531CT, 531CU, 531CV, 531CW, 531CX, 531CY, 531CZ, 531DA, 531DB, 531DC, 531DD, 531DE, 531DF, 531DG, 531DH, 531DI, 531DJ, 531DK, 531DL, 531DM, 531DN, 531DO, 531DP, 531DQ, 531DR, 531DS, 531DT, 531DU, 531DV, 531DW, 531DX, 531DY, 531DZ, 531EA, 531EB, 531EC, 531ED, 531EE, 531EF, 531EG, 531EH, 531EI, 531EJ, 531EK, 531EL, 531EM, 531EN, 531EO, 531EP, 531EQ, 531ER, 531ES, 531ET, 531EU, 531EV, 531EW, 531EX, 531EY, 531EZ, 531FA, 531FB, 531FC, 531FD, 531FE, 531FF, 531FG, 531FH, 531FI, 531FJ, 531FK, 531FL, 531FM, 531FN, 531FO, 531FP, 531FQ, 531FR, 531FS, 531FT, 531FU, 531FV, 531FW, 531FX, 531FY, 531FZ, 531GA, 531GB, 531GC, 531GD, 531GE, 531GF, 531GG, 531GH, 531GI, 531GJ, 531GK, 531GL, 531GM, 531GN, 531GO, 531GP, 531GQ, 531GR, 531GS, 531GT, 531GU, 531GV, 531GW, 531GX, 531GY, 531GZ, 531HA, 531HB, 531HC, 531HD, 531HE, 531HF, 531HG, 531HH, 531HI, 531HJ, 531HK, 531HL, 531HM, 531HN, 531HO, 531HP, 531HQ, 531HR, 531HS, 531HT, 531HU, 531HV, 531HW, 531HX, 531HY, 531HZ, 531IA, 531IB, 531IC, 531ID, 531IE, 531IF, 531IG, 531IH, 531II, 531IJ, 531IK, 531IL, 531IM, 531IN, 531IO, 531IP, 531IQ, 531IR, 531IS, 531IT, 531IU, 531IV, 531IW, 531IX, 531IY, 531IZ, 531JA, 531JB, 531JC, 531JD, 531JE, 531JF, 531JG, 531JH, 531JI, 531JJ, 531JK, 531JL, 531JM, 531JN, 531JO, 531JP, 531JQ, 531JR, 531JS, 531JT, 531JU, 531JV, 531JW, 531JX, 531JY, 531JZ, 531KA, 531KB, 531KC, 531KD, 531KE, 531KF, 531KG, 531KH, 531KI, 531KJ, 531KK, 531KL, 531KM, 531KN, 531KO, 531KP, 531KQ, 531KR, 531KS, 531KT, 531KU, 531KV, 531KW, 531KX, 531KY, 531KZ, 531LA, 531LB, 531LC, 531LD, 531LE, 531LF, 531LG, 531LH, 531LI, 531LJ, 531LK, 531LL, 531LM, 531LN, 531LO, 531LP, 531LQ, 531LR, 531LS, 531LT, 531LU, 531LV, 531LW, 531LX, 531LY, 531LZ, 531MA, 531MB, 531MC, 531MD, 531ME, 531MF, 531MG, 531MH, 531MI, 531MJ, 531MK, 531ML, 531MM, 531MN, 531MO, 531MP, 531MQ, 531MR, 531MS, 531MT, 531MU, 531MV, 531MW, 531MX, 531MY, 531MZ, 531NA, 531NB, 531NC, 531ND, 531NE, 531NF, 531NG, 531NH, 531NI, 531NJ, 531NK, 531NL, 531NM, 531NN, 531NO, 531NP, 531NQ, 531NR, 531NS, 531NT, 531NU, 531NV, 531NW, 531NX, 531NY, 531NZ, 531OA, 531OB, 531OC, 531OD, 531OE, 531OF, 531OG, 531OH, 531OI, 531OJ, 531OK, 531OL, 531OM, 531ON, 531OO, 531OP, 531OQ, 531OR, 531OS, 531OT, 531OU, 531OV, 531OW, 531OX, 531OY, 531OZ, 531PA, 531PB, 531PC, 531PD, 531PE, 531PF, 531PG, 531PH, 531PI, 531PJ, 531PK, 531PL, 531PM, 531PN, 531PO, 531PP, 531PQ, 531PR, 531PS, 531PT, 531PU, 531PV, 531PW, 531PX, 531PY, 531PZ, 531QA, 531QB, 531QC, 531QD, 531QE, 531QF, 531QG, 531QH, 531QI, 531QJ, 531QK, 531QL, 531QM, 531QN, 531QO, 531QP, 531QQ, 531QR, 531QS, 531QT, 531QU, 531QV, 531QW, 531QX, 531QY, 531QZ, 531RA, 531RB, 531RC, 531RD, 531RE, 531RF, 531RG, 531RH, 531RI, 531RJ, 531RK, 531RL, 531RM, 531RN, 531RO, 531RP, 531RQ, 531RR, 531RS, 531RT, 531RU, 531RV, 531RW, 531RX, 531RY, 531RZ, 531SA, 531SB, 531SC, 531SD, 531SE, 531SF, 531SG, 531SH, 531SI, 531SJ, 531SK, 531SL, 531SM, 531SN, 531SO, 531SP, 531SQ, 531SR, 531SS, 531ST, 531SU, 531SV, 531SW, 531SX, 531SY, 531SZ, 531TA, 531TB, 531TC, 531TD, 531TE, 531TF, 531TG, 531TH, 531TI, 531TJ, 531TK, 531TL, 531TM, 531TN, 531TO, 531TP, 531TQ, 531TR, 531TS, 531TT, 531TU, 531TV, 531TW, 531TX, 531TY, 531TZ, 531UA, 531UB, 531UC, 531UD, 531UE, 531UF, 531UG, 531UH, 531UI, 531UJ, 531UK, 531UL, 531UM, 531UN, 531UO, 531UP, 531UQ, 531UR, 531US, 531UT, 531UU, 531UV, 531UW, 531UX, 531UY, 531UZ, 531VA, 531VB, 531VC, 531VD, 531VE, 531VF, 531VG, 531VH, 531VI, 531VJ, 531VK, 531VL, 531VM, 531VN, 531VO, 531VP, 531VQ, 531VR, 531VS, 531VT, 531VU, 531VV, 531VW, 531VX, 531VY, 531VZ, 531WA, 531WB, 531WC, 531WD, 531WE, 531WF, 531WG, 531WH, 531WI, 531WJ, 531WK, 531WL, 531WM, 531WN, 531WO, 531WP, 531WQ, 531WR, 531WS, 531WT, 531WU, 531WV, 531WW, 531WX, 531WY, 531WZ, 531XA, 531XB, 531XC, 531XD, 531XE, 531XF, 531XG, 531XH, 531XI, 531XJ, 531XK, 531XL, 531XM, 531XN, 531XO, 531XP, 531XQ, 531XR, 531XS, 531XT, 531XU, 531XV, 531XW, 531XX, 531XY, 531XZ, 531YA, 531YB, 531YC, 531

223-5816 Mullen Pl NW, Edmonton, AB

Main Floor Interior Area 759.87 sq ft



PREPARED: 2025/04/05

While regions are excluded from total floor area in IGUDE floor plans, All room dimensions and floor areas must be considered approximate and are subject to independent verification.



Year Built	2016
Type	Condo / Townhouse
Sub-Type	Lowrise Apartment
Style	Single Level Apartment
Status	Active

Community Information

Address	223 5816 Mullen Place
Area	Edmonton
Subdivision	MacTaggart
City	Edmonton
County	ALBERTA
Province	AB
Postal Code	T6R 0W3

Amenities

Amenities	Parking-Visitor, Security Door
Parking Spaces	1
Parking	Underground

Interior

Interior Features	ensuite bathroom
Appliances	Dishwasher-Built-In, Hood Fan, Refrigerator, Stacked Washer/Dryer, Stove-Electric, Window Coverings
Heating	Hot Water, Natural Gas
# of Stories	4
Stories	1
Has Basement	Yes
Basement	None, No Basement

Exterior

Exterior	Wood, Stone, Vinyl
Exterior Features	Golf Nearby, Playground Nearby, Public Transportation, Schools, Shopping Nearby
Roof	Asphalt Shingles
Construction	Wood, Stone, Vinyl
Foundation	Concrete Perimeter

Additional Information

Date Listed	May 27th, 2025
Days on Market	21
Zoning	Zone 14
Condo Fee	\$367

DATA IS DEEMED RELIABLE BUT IS NOT GUARANTEED ACCURATE BY THE REALTORS® ASSOCIATION OF EDMONTON. COPYRIGHT 2025 BY THE REALTORS® ASSOCIATION OF EDMONTON. ALL RIGHTS RESERVED. Trademarks are owned or controlled by the Canadian Real Estate Association (CREA) and identify real estate professionals who are members of CREA (REALTOR®, REALTORS®) and/or the quality of services they provide (MLS®, Multiple Listing Service®)

Listing information last updated on June 17th, 2025 at 9:02am MDT