

\$525,000 - 9820 185 Street, Edmonton

MLS® #E4436890

\$525,000

3 Bedroom, 2.50 Bathroom, 1,851 sqft

Single Family on 0.00 Acres

La Perle, Edmonton, AB

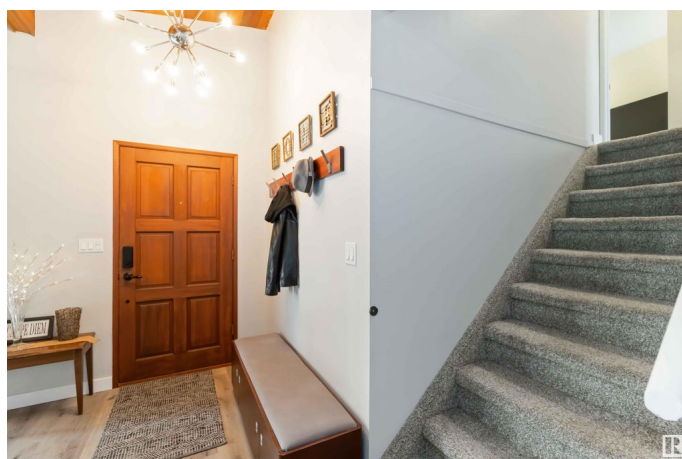
Come home to this beautifully updated and renovated 1,851sqft, 3-BEDROOM, move-in-ready, split-level style FAMILY HOME in La Perle. The main floor opens to a beautiful vaulted ceiling over the living and dining rooms. The updated kitchen has an island dining nook overlooking the beautiful park-like backyard. The sunken family room features a beautiful fireplace & offers access to the backyard park. Located just off the family room is the coffee bar, laundry, a 2pce powder room, access to the oversized 24x24 attached garage, & a side entrance to the yard. Upstairs, youâ€™ll find 3 spacious bedrooms, including a serene primary suite with 3pce ensuite bath. The main bath is conveniently located between the other two bedrooms. The partially developed basement adds great bonus space, including an area for guests to stay comfortably and a home gym. Situated at the bottom of a quiet west end CUL-DE-SAC location, this home blends modern updates with family-friendly function & proximity to ALL amenities. Come home!

Built in 1980

Essential Information

MLS® # E4436890

Price \$525,000



| | |
|----------------|------------------------|
| Bedrooms | 3 |
| Bathrooms | 2.50 |
| Full Baths | 2 |
| Half Baths | 1 |
| Square Footage | 1,851 |
| Acres | 0.00 |
| Year Built | 1980 |
| Type | Single Family |
| Sub-Type | Detached Single Family |
| Style | 1 and Half Storey |
| Status | Active |

Community Information

| | |
|-------------|-----------------|
| Address | 9820 185 Street |
| Area | Edmonton |
| Subdivision | La Perle |
| City | Edmonton |
| County | ALBERTA |
| Province | AB |
| Postal Code | T5T 3E5 |

Amenities

| | |
|-----------|--|
| Amenities | Ceiling 10 ft., Deck, Detectors Smoke, Hot Tub |
| Parking | Double Garage Attached, Over Sized |

Interior

| | |
|-------------------|---|
| Interior Features | ensuite bathroom |
| Appliances | Dishwasher-Built-In, Dryer, Garage Control, Garage Opener, Microwave Hood Fan, Refrigerator, Storage Shed, Stove-Electric, Vacuum System Attachments, Vacuum Systems, Washer, Window Coverings, Wine/Beverage Cooler, Hot Tub |
| Heating | Forced Air-1, Natural Gas |
| Fireplace | Yes |
| Fireplaces | Brick Facing, Glass Door |
| Stories | 2 |
| Has Basement | Yes |
| Basement | Full, Partially Finished |

Exterior

| | |
|-------------------|--|
| Exterior | Wood, Brick |
| Exterior Features | Cul-De-Sac, Flat Site, Golf Nearby, Level Land, Park/Reserve, Playground Nearby, Public Transportation, Schools, Shopping Nearby |
| Roof | Asphalt Shingles |
| Construction | Wood, Brick |
| Foundation | Concrete Perimeter |

School Information

| | |
|------------|---------------------|
| Elementary | LaPerle School |
| Middle | Alex Janvier School |
| High | Jasper Place School |

Additional Information

| | |
|----------------|----------------|
| Date Listed | May 16th, 2025 |
| Days on Market | 4 |
| Zoning | Zone 20 |

DATA IS DEEMED RELIABLE BUT IS NOT GUARANTEED ACCURATE BY THE REALTORS® ASSOCIATION OF EDMONTON. COPYRIGHT 2025 BY THE REALTORS® ASSOCIATION OF EDMONTON. ALL RIGHTS RESERVED. Trademarks are owned or controlled by the Canadian Real Estate Association (CREA) and identify real estate professionals who are members of CREA (REALTOR®, REALTORS®) and/or the quality of services they provide (MLS®, Multiple Listing Service®)

Listing information last updated on May 20th, 2025 at 9:32am MDT