

\$509,000 - 6 Westwyck Link, Spruce Grove

MLS® #E4435937

\$509,000

4 Bedroom, 3.00 Bathroom, 1,758 sqft

Single Family on 0.00 Acres

Fenwyck, Spruce Grove, AB

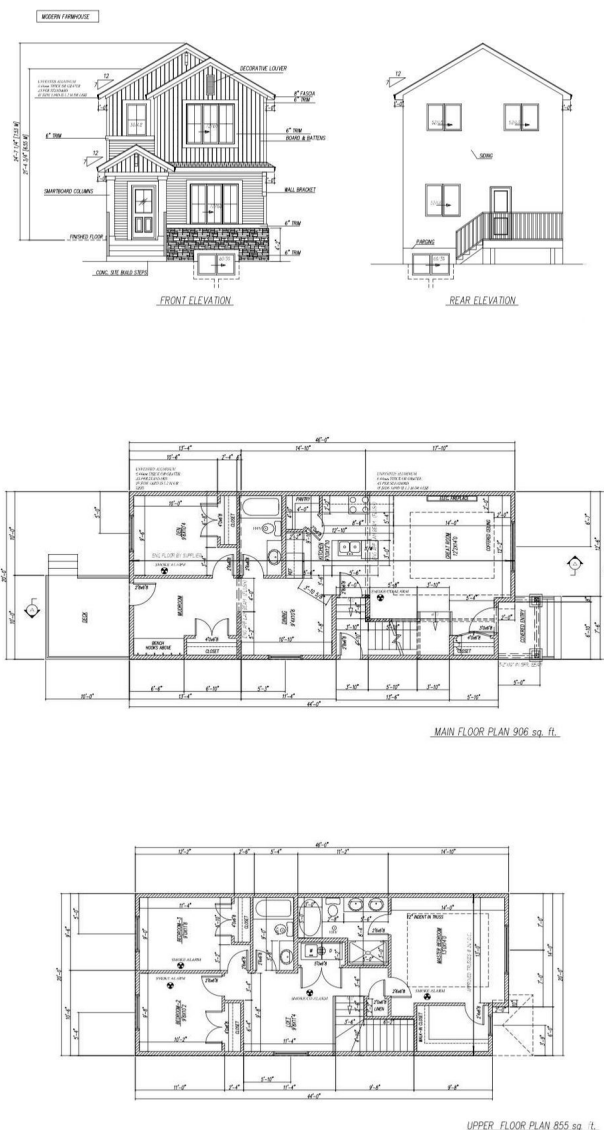
Welcome to this stunning brand new home in the desirable community of Fenwyck! Step inside to discover an open-concept living space filled with natural light, thanks to oversized windows that brighten both the kitchen and living room. The main level showcases luxurious vinyl plank flooring, a sleek kitchen with quartz countertops, ample modern cabinetry, a cozy fireplace, and the added convenience of a main floor bedroom with a full 4-piece bathroom. Upstairs, youâ€™ll find three spacious bedrooms, a 4-piece bathroom perfect for family or guests, plus a luxurious 5-piece ensuite in the primary bedroom. The upper level also includes a bonus room and convenient upstairs laundry. This home comes with a separate entrance, offering potential for a future basement suite. The spacious backyard is complete with a double detached garageâ€”perfect for your growing needs. Buyers still have the exciting opportunity to choose select finishes and add their personal touch to make this home truly their own.

Built in 2025

Essential Information

MLS® # E4435937

Price \$509,000



Bedrooms	4
Bathrooms	3.00
Full Baths	3
Square Footage	1,758
Acres	0.00
Year Built	2025
Type	Single Family
Sub-Type	Detached Single Family
Style	2 Storey
Status	Active

Community Information

Address	6 Westwyck Link
Area	Spruce Grove
Subdivision	Fenwyck
City	Spruce Grove
County	ALBERTA
Province	AB
Postal Code	T7X 3H1

Amenities

Amenities	On Street Parking, Carbon Monoxide Detectors, Ceiling 9 ft., Detectors Smoke, Hot Water Natural Gas, No Animal Home, No Smoking Home, Vinyl Windows, HRV System
Parking	Double Garage Detached

Interior

Interior Features	ensuite bathroom
Appliances	Builder Appliance Credit
Heating	Forced Air-1, Natural Gas
Fireplace	Yes
Fireplaces	Insert
Stories	2
Has Basement	Yes
Basement	Full, Unfinished

Exterior

Exterior	Wood, Stone, Vinyl
Exterior Features	Back Lane, Flat Site, Public Transportation, Schools, Shopping Nearby

Roof	Asphalt Shingles
Construction	Wood, Stone, Vinyl
Foundation	Concrete Perimeter

Additional Information

Date Listed	May 12th, 2025
Days on Market	6
Zoning	Zone 91

DATA IS DEEMED RELIABLE BUT IS NOT GUARANTEED ACCURATE BY THE REALTORS® ASSOCIATION OF EDMONTON. COPYRIGHT 2025 BY THE REALTORS® ASSOCIATION OF EDMONTON. ALL RIGHTS RESERVED.Trademarks are owned or controlled by the Canadian Real Estate Association (CREA) and identify real estate professionals who are members of CREA (REALTOR®, REALTORS®) and/or the quality of services they provide (MLS®, Multiple Listing Service®)

Listing information last updated on May 18th, 2025 at 9:47am MDT