

\$599,000 - 1719 164 Street, Edmonton

MLS® #E4434279

\$599,000

3 Bedroom, 2.50 Bathroom, 1,981 sqft

Single Family on 0.00 Acres

Glenridding Heights, Edmonton, AB

Gorgeous Home with AC & 220V EV charger in Glenridding Heights! Beautifully maintained nearly 2,000 sqft 2-storey home located on a quiet street in Glenridding Heights, featuring 9 ft ceilings, pot lights, maple hardwood flooring, and extra side windows for plenty of natural light. The open-concept main floor offers a cozy gas fireplace, a chefs kitchen with large island, SS appliances, quartz countertops, a walk-through pantry, a 2-pc bath and a mudroom. Upstairs includes a spacious bonus room, laundry, and 3 bedrooms, including a primary suite with a large walk-in closet and 5-piece ensuite. Fully fenced and landscaped backyard. Additional highlights include air conditioning, 220V EV charger, quartz countertops throughout, custom curtains a Tes and fully landscaped! A prime location near parks, ponds, Currents of Windermere shopping, and easy access to Anthony Henday. Walking Distance to Future Glenridding Height Elementary/Junior/High Schools! Move-in ready!

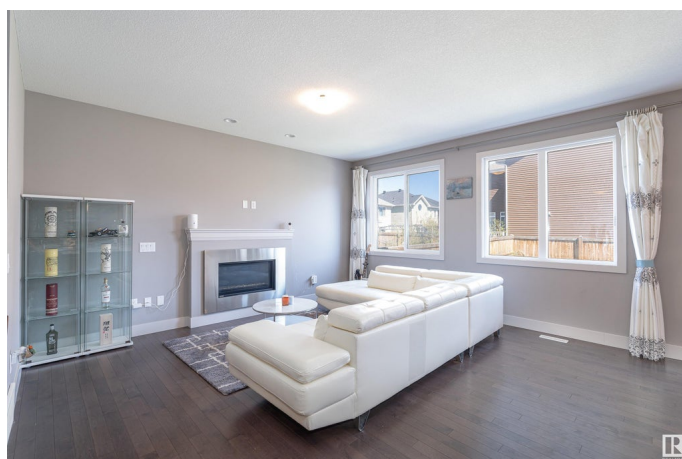
Built in 2016

Essential Information

MLS® # E4434279

Price \$599,000

Bedrooms 3



Bathrooms	2.50
Full Baths	2
Half Baths	1
Square Footage	1,981
Acres	0.00
Year Built	2016
Type	Single Family
Sub-Type	Detached Single Family
Style	2 Storey
Status	Active

Community Information

Address	1719 164 Street
Area	Edmonton
Subdivision	Glenridding Heights
City	Edmonton
County	ALBERTA
Province	AB
Postal Code	T6W 3P6

Amenities

Amenities	Air Conditioner, Ceiling 9 ft., Smart/Program. Thermostat, See Remarks
Parking Spaces	4
Parking	Double Garage Attached

Interior

Interior Features	ensuite bathroom
Appliances	Air Conditioning-Central, Dishwasher-Built-In, Dryer, Garage Control, Garage Opener, Hood Fan, Oven-Microwave, Refrigerator, Stove-Electric, Washer, Window Coverings, See Remarks, TV Wall Mount
Heating	Forced Air-1, Natural Gas
Stories	2
Has Basement	Yes
Basement	Full, Unfinished

Exterior

Exterior	Wood, Stone, Vinyl
Exterior Features	Fenced, Landscaped, Schools, Shopping Nearby, See Remarks

Roof	Asphalt Shingles
Construction	Wood, Stone, Vinyl
Foundation	Concrete Perimeter

Additional Information

Date Listed	May 3rd, 2025
Days on Market	65
Zoning	Zone 56

DATA IS DEEMED RELIABLE BUT IS NOT GUARANTEED ACCURATE BY THE REALTORS® ASSOCIATION OF EDMONTON. COPYRIGHT 2025 BY THE REALTORS® ASSOCIATION OF EDMONTON. ALL RIGHTS RESERVED.Trademarks are owned or controlled by the Canadian Real Estate Association (CREA) and identify real estate professionals who are members of CREA (REALTOR®, REALTORS®) and/or the quality of services they provide (MLS®, Multiple Listing Service®)

Listing information last updated on July 7th, 2025 at 12:18pm MDT