

\$689,900 - 9429 100a Street, Edmonton

MLS® #E4432113

\$689,900

5 Bedroom, 3.50 Bathroom, 1,733 sqft
Single Family on 0.00 Acres

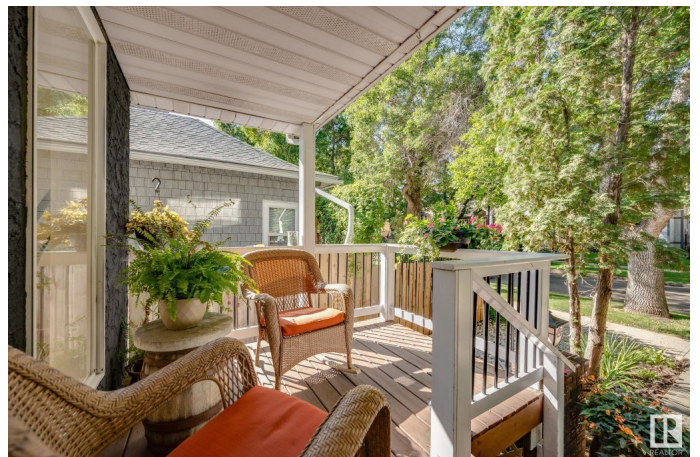
Rossdale, Edmonton, AB

FULLY RENOVATED 5 BED HOME
BACKING ONTO THE RIVER VALLEY
TRAILS IN ROSSDALE!! With 10/10 curb
appeal and tranquil pond this stunning open
concept living space is sure to impress.
Drenched in natural light, you are greeted by
your spacious living room with a gas fireplace
accentuated by maple hardwood floors
throughout. Step into your dream kitchen
complete with an eat up island, cherrywood
custom cabinets, granite counters and tons of
space to cook your favourite meals. Head out
to your peaceful backyard oasis backing
parkland and endless River Valley views.
Upstairs you will find a huge primary complete
with a balcony and 4 pc ensuite. 2 other
generous sized bedrooms and upper floor
laundry is perfect for a growing family, home
office or guest suite. Downstairs you have the
another full kitchen, rec space, 2 bedrooms
and 3 pc bath. Surrounded by beauty, minutes
away from the downtown core, shops, schools,
playground, local eats and countless
amenities. Welcome home!

Built in 1988

Essential Information

MLS® #	E4432113
Price	\$689,900



Bedrooms	5
Bathrooms	3.50
Full Baths	3
Half Baths	1
Square Footage	1,733
Acres	0.00
Year Built	1988
Type	Single Family
Sub-Type	Detached Single Family
Style	2 Storey
Status	Active

Community Information

Address	9429 100a Street
Area	Edmonton
Subdivision	Rosssdale
City	Edmonton
County	ALBERTA
Province	AB
Postal Code	T5K 0V4

Amenities

Amenities	On Street Parking, Deck, Front Porch, See Remarks
Parking Spaces	2
Parking	Parking Pad Cement/Paved

Interior

Interior Features	ensuite bathroom
Appliances	Dishwasher-Built-In, Dryer, Hood Fan, Oven-Microwave, Washer, Refrigerators-Two, Stoves-Two
Heating	Forced Air-1, Natural Gas
Fireplace	Yes
Fireplaces	Glass Door
Stories	2
Has Basement	Yes
Basement	Full, Finished

Exterior

Exterior	Wood, Stucco
----------	--------------

Exterior Features	Back Lane, Backs Onto Park/Trees, Fenced, Park/Reserve, Playground Nearby, Ravine View, Schools, Shopping Nearby, See Remarks
Roof	Asphalt Shingles
Construction	Wood, Stucco
Foundation	Concrete Perimeter

School Information

Elementary	Garneau School
Middle	McKernan School
High	Strathcona School

Additional Information

Date Listed	April 22nd, 2025
Days on Market	9
Zoning	Zone 12

DATA IS DEEMED RELIABLE BUT IS NOT GUARANTEED ACCURATE BY THE REALTORS® ASSOCIATION OF EDMONTON. COPYRIGHT 2025 BY THE REALTORS® ASSOCIATION OF EDMONTON. ALL RIGHTS RESERVED.Trademarks are owned or controlled by the Canadian Real Estate Association (CREA) and identify real estate professionals who are members of CREA (REALTOR®, REALTORS®) and/or the quality of services they provide (MLS®, Multiple Listing Service®)

Listing information last updated on May 1st, 2025 at 12:17pm MDT