

**\$274,900**

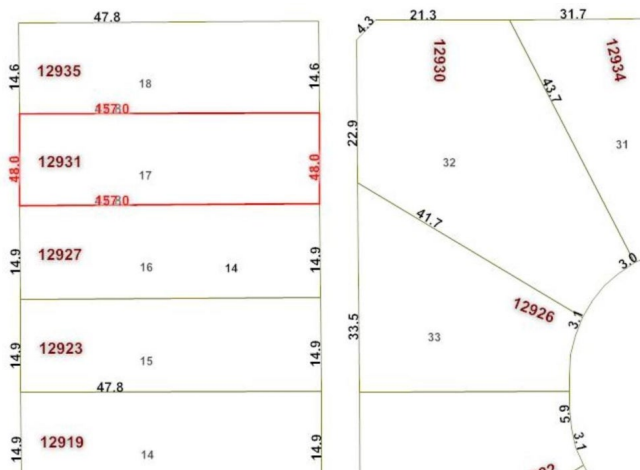
Lauderdale, Edmonton, AB

48' X 157 ' LOT IN LAUDERDALE. READY  
FOR MLI SELECT 4 PLEX APPLICATION.



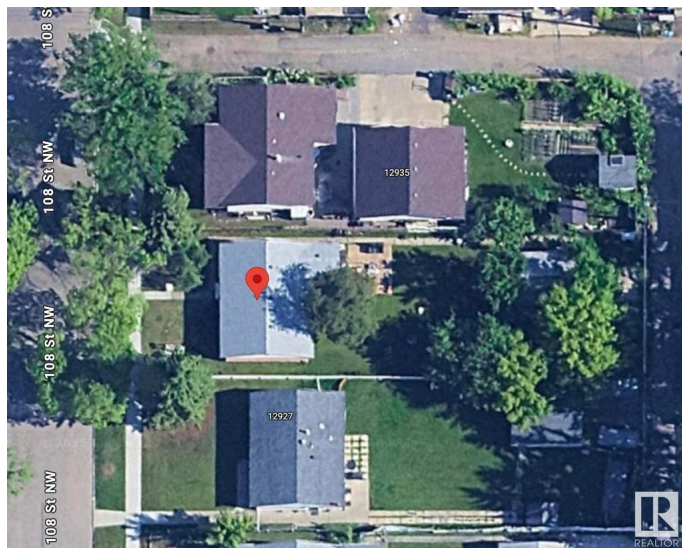
## Essential Information

MLS® #	E4431882
Price	\$274,900
Bathrooms	1.00
Full Baths	1
Acres	0.00
Type	Single Family
Sub-Type	Vacant Lot/Land
Status	Active



## Community Information

Address	12931 108 Street
Area	Edmonton
Subdivision	Lauderdale
City	Edmonton
County	ALBERTA
Province	AB
Postal Code	T5E 4X2



## Amenities

Parking	Single Garage Detached
---------	------------------------

## Exterior

Exterior Features   Public Transportation, Schools, Shopping Nearby

**Additional Information**

Date Listed            April 20th, 2025  
Days on Market      12  
Zoning                Zone 01

DATA IS DEEMED RELIABLE BUT IS NOT GUARANTEED ACCURATE BY THE REALTORS® ASSOCIATION OF EDMONTON. COPYRIGHT 2025 BY THE REALTORS® ASSOCIATION OF EDMONTON. ALL RIGHTS RESERVED.Trademarks are owned or controlled by the Canadian Real Estate Association (CREA) and identify real estate professionals who are members of CREA (REALTOR®, REALTORS®) and/or the quality of services they provide (MLS®, Multiple Listing Service®)  
Listing information last updated on May 2nd, 2025 at 3:17am MDT