

## \$345,000 - 10141 95 Street, Edmonton

MLS® #E4431715

**\$345,000**

2 Bedroom, 2.00 Bathroom, 1,503 sqft

Condo / Townhouse on 0.00 Acres

Boyle Street, Edmonton, AB

Welcome to the historic Hecla Lofts, one of Edmonton's 1st generation for apartment living that is located minutes from Downtown and a stone's throw to the new LRT Valley Line station. This unit is 1 of 14, so living here, is like being a part of a tight knit community. Walking into the unit you will immediately appreciate the exposed brick and large windows that let in ample natural light. On the main level you will find a spacious kitchen outfitted with newer brushed metal appliances (stainless steel look without the fingerprints-yay!). You will also find a dining area and family area, it's an open concept so what you choose to do with the space is completely up to you! You will also find a 4 piece bath (heated floors) and ample built-in storage. The spiral staircase leads you to the lower level where you will find a large primary bedroom that has a 3 piece ensuite with heated floors! You also have access to the roof top patio with City and river valley views. Perfect for the urban enthusiast!

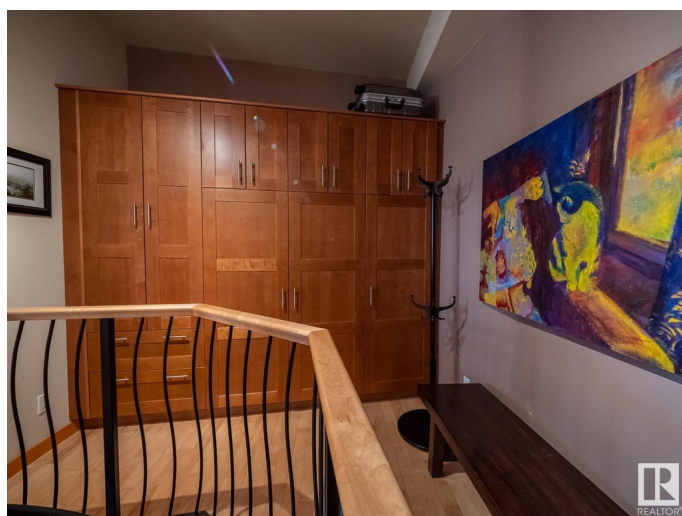
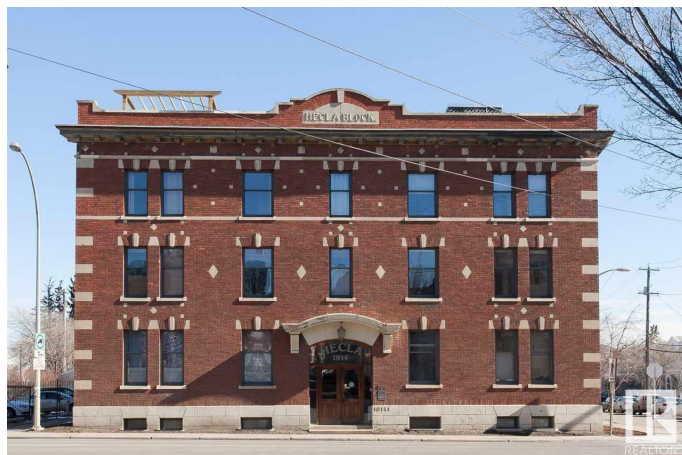
Built in 1914

### Essential Information

MLS® # E4431715

Price \$345,000

Bedrooms 2



Bathrooms	2.00
Full Baths	2
Square Footage	1,503
Acres	0.00
Year Built	1914
Type	Condo / Townhouse
Sub-Type	Lowrise Apartment
Style	Multi Level Apartment
Status	Active

### Community Information

Address	10141 95 Street
Area	Edmonton
Subdivision	Boyle Street
City	Edmonton
County	ALBERTA
Province	AB
Postal Code	T5H 2A8

### Amenities

Amenities	Ceiling 10 ft., Exercise Room, Hot Water Natural Gas, No Smoking Home, Parking-Visitor, Secured Parking, Vinyl Windows
Parking	Parking Pad Cement/Paved

### Interior

Interior Features	ensuite bathroom
Appliances	Dishwasher-Built-In, Dryer, Refrigerator, Stove-Electric, Washer
Heating	Forced Air-1, Natural Gas
# of Stories	4
Stories	2
Has Basement	Yes
Basement	None, No Basement

### Exterior

Exterior	Brick
Exterior Features	Public Swimming Pool, Public Transportation, River Valley View, Shopping Nearby, Stream/Pond, View City, View Downtown, See Remarks
Roof	Tar & Gravel

Construction	Brick
Foundation	Concrete Perimeter

**Additional Information**

Date Listed	April 18th, 2025
Days on Market	14
Zoning	Zone 13
Condo Fee	\$631

DATA IS DEEMED RELIABLE BUT IS NOT GUARANTEED ACCURATE BY THE REALTORS® ASSOCIATION OF EDMONTON. COPYRIGHT 2025 BY THE REALTORS® ASSOCIATION OF EDMONTON. ALL RIGHTS RESERVED.Trademarks are owned or controlled by the Canadian Real Estate Association (CREA) and identify real estate professionals who are members of CREA (REALTOR®, REALTORS®) and/or the quality of services they provide (MLS®, Multiple Listing Service®)

Listing information last updated on May 2nd, 2025 at 2:02am MDT