

## **\$639,900 - 1140 Goodwin Circle Circle, Edmonton**

MLS® #E4423385

**\$639,900**

5 Bedroom, 3.50 Bathroom, 2,281 sqft

Single Family on 0.00 Acres

Glastonbury, Edmonton, AB

Welcome to Parkland Estates in Glastonbury. Perfect home for multigenerational family. This beautifully appointed two storey offers 5 bedrooms, finished basement & with an outstanding location. Upon entry, you are greeted with open concept living. The gourmet kitchen offers plenty of cabinets, stainless steel appliances, corner pantry & island that overlooks the dining & living room c/w cozy fireplace. Flex room & guest bath compliment the functional layout. Curved staircase leads you upstairs where you will find a family sized bonus room. The primary bedroom is spacious and offers a 5 piece ensuite with jacuzzi tub. The two spacious bedrooms, 4pc.bath & laundry complete the upper level. ENJOY the fully finished basement with 2 more bedrooms, 3pc bath, flex room & tons of storage, making this the perfect family home! LOVE the fenced & landscaped SOUTH yard with tiered deck. Steps away from Guinevere Park, trails, schools & shopping, plus easy access to Whitemud Drive & Anthony Henday.

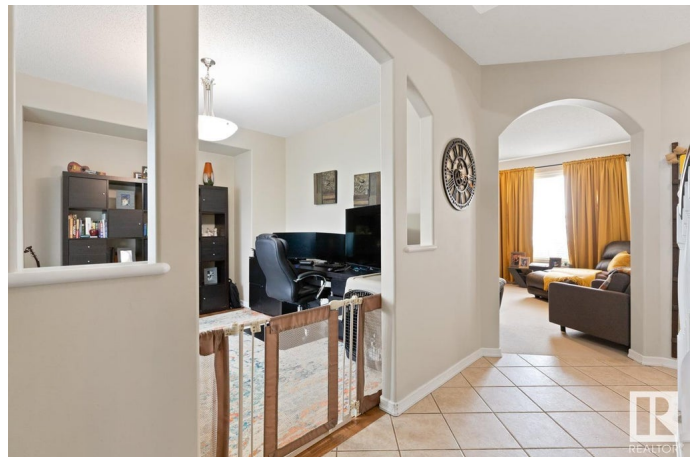
Built in 2005

### **Essential Information**

MLS® # E4423385

Price \$639,900

Bedrooms 5



Bathrooms	3.50
Full Baths	3
Half Baths	1
Square Footage	2,281
Acres	0.00
Year Built	2005
Type	Single Family
Sub-Type	Detached Single Family
Style	2 Storey
Status	Active

### Community Information

Address	1140 Goodwin Circle Circle
Area	Edmonton
Subdivision	Glastonbury
City	Edmonton
County	ALBERTA
Province	AB
Postal Code	T5T 6W6

### Amenities

Amenities	Deck, Gazebo, See Remarks
Parking	Double Garage Attached

### Interior

Interior Features	ensuite bathroom
Appliances	Dishwasher-Built-In, Dryer, Garage Control, Garage Opener, Refrigerator, Stove-Electric, Washer
Heating	Forced Air-1, Natural Gas
Fireplace	Yes
Fireplaces	Corner
Stories	3
Has Basement	Yes
Basement	Full, Finished

### Exterior

Exterior	Wood, Stone, Vinyl
Exterior Features	Cul-De-Sac, Fenced, Landscaped, Playground Nearby, Schools, Shopping Nearby, See Remarks

Roof	Asphalt Shingles
Construction	Wood, Stone, Vinyl
Foundation	Concrete Perimeter

**Additional Information**

Date Listed	February 28th, 2025
Days on Market	63
Zoning	Zone 58

DATA IS DEEMED RELIABLE BUT IS NOT GUARANTEED ACCURATE BY THE REALTORS® ASSOCIATION OF EDMONTON. COPYRIGHT 2025 BY THE REALTORS® ASSOCIATION OF EDMONTON. ALL RIGHTS RESERVED.Trademarks are owned or controlled by the Canadian Real Estate Association (CREA) and identify real estate professionals who are members of CREA (REALTOR®, REALTORS®) and/or the quality of services they provide (MLS®, Multiple Listing Service®)

Listing information last updated on May 2nd, 2025 at 1:02am MDT