

\$559,900 - 22413 83a Avenue, Edmonton

MLS® #E4422787

\$559,900

3 Bedroom, 2.50 Bathroom, 1,723 sqft
Single Family on 0.00 Acres

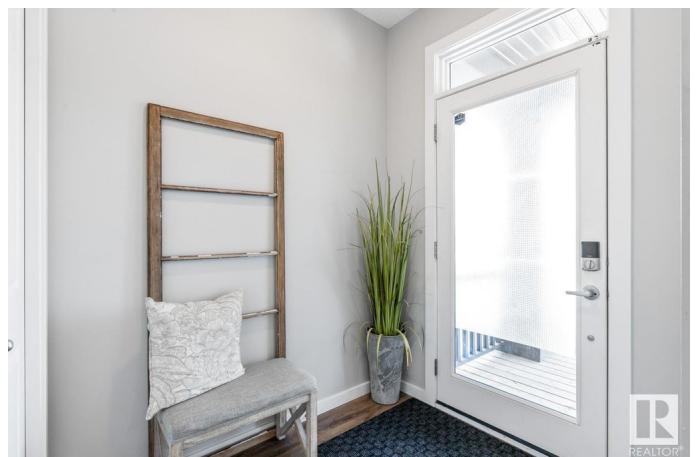
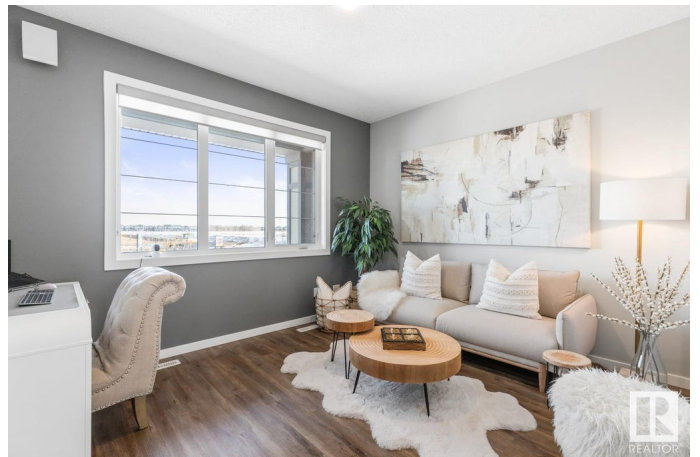
Rosenthal (Edmonton), Edmonton, AB

Welcome to this former HOMES BY AVI SHOWHOME in the highly sought-after community of Rosenthal! This stunning property features a spacious, open floor plan with 9-foot ceilings and TWO EXPANSIVE LIVING ROOMS, perfect for both relaxation and entertainment. The bright and inviting chef's kitchen is equipped with stainless steel appliances and quartz countertops, offering both style and functionality. The kitchen and dining room provide an ideal space for daily living and hosting family and friends. Upstairs, you'll find three generously sized bedrooms, offering plenty of space and comfort. Additionally, there is a full laundry room upstairs for added convenience. This immaculately kept home is a MUST SEE. PARTLY FINISHED LEGAL BASEMENT SUITE WITH PERMITS! TWO FURNANCES, ALL SUITE APPLIANCES + HVAC, PLUMBING AND ELECTRICAL COMPLETED. WELCOME HOME!

Built in 2019

Essential Information

MLS® #	E4422787
Price	\$559,900
Bedrooms	3
Bathrooms	2.50



Full Baths	2
Half Baths	1
Square Footage	1,723
Acres	0.00
Year Built	2019
Type	Single Family
Sub-Type	Detached Single Family
Style	2 Storey
Status	Active

Community Information

Address	22413 83a Avenue
Area	Edmonton
Subdivision	Rosenthal (Edmonton)
City	Edmonton
County	ALBERTA
Province	AB
Postal Code	T5T 7R2

Amenities

Amenities	Ceiling 9 ft., Deck
Parking	Double Garage Detached

Interior

Interior Features	ensuite bathroom
Appliances	Air Conditioning-Central, Dishwasher-Built-In, Garage Opener, Microwave Hood Fan, Window Coverings, Dryer-Two, Refrigerators-Two, Stoves-Two, Washers-Two
Heating	Forced Air-1, Natural Gas
Stories	2
Has Suite	Yes
Has Basement	Yes
Basement	Full, Partially Finished

Exterior

Exterior	Wood, Vinyl
Exterior Features	Landscaped, Playground Nearby, Public Transportation, Schools, Shopping Nearby
Roof	Asphalt Shingles

Construction	Wood, Vinyl
Foundation	Concrete Perimeter

Additional Information

Date Listed	February 25th, 2025
Days on Market	66
Zoning	Zone 58
HOA Fees	115
HOA Fees Freq.	Annually

DATA IS DEEMED RELIABLE BUT IS NOT GUARANTEED ACCURATE BY THE REALTORS® ASSOCIATION OF EDMONTON. COPYRIGHT 2025 BY THE REALTORS® ASSOCIATION OF EDMONTON. ALL RIGHTS RESERVED.Trademarks are owned or controlled by the Canadian Real Estate Association (CREA) and identify real estate professionals who are members of CREA (REALTOR®, REALTORS®) and/or the quality of services they provide (MLS®, Multiple Listing Service®)

Listing information last updated on May 2nd, 2025 at 4:47pm MDT