

\$679,900 - 2143 32 Avenue, Edmonton

MLS® #E4421525

\$679,900

6 Bedroom, 3.50 Bathroom, 2,384 sqft

Single Family on 0.00 Acres

Silver Berry, Edmonton, AB

Elegant contemporary luxury gracefully woven into this exquisitely renovated 2 Storey, built on a massive 8700 sqft lot in the heart of Silverberry. This home offers above 3400 sqft combined on 3 flrs, with 2383.79 sqft above ground. This haven offers 6 beds, 3.5 baths, Main floor Den w/ double french doors + incredible mega Bonus Room. Kitchen features granite countertops & exciting 4ft by 2 ft white tiles for backsplash to ceiling. Stainless steel appliances compliment the dual tone cabinet finish from wood grain to gloss white MDF cabinet fronts. The living room was redesigned to re-accentuate the original gas fireplace into a modern elegance fireplace wall built in matt black tiles with 3D beveled corners taking your breath away w/ 9inch Vinyl plank. Front entry was beautifully rebuilt in 2ft by 2ft white gloss tiles. The complete lights have been changed to LED lights and home has been professionally painted to an incredible color. New 50 oz carpets throughout and developed basement. Dont Miss! Ownit

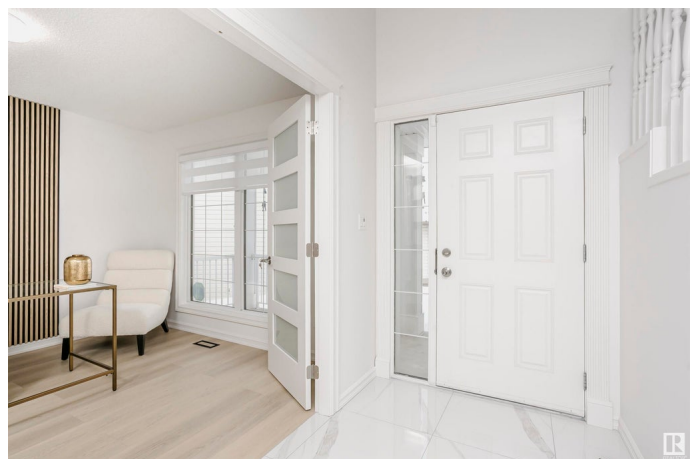
Built in 2006

Essential Information

MLS® # E4421525

Price \$679,900

Bedrooms 6



Bathrooms	3.50
Full Baths	3
Half Baths	1
Square Footage	2,384
Acres	0.00
Year Built	2006
Type	Single Family
Sub-Type	Detached Single Family
Style	2 Storey
Status	Active

Community Information

Address	2143 32 Avenue
Area	Edmonton
Subdivision	Silver Berry
City	Edmonton
County	ALBERTA
Province	AB
Postal Code	T6T 0A9

Amenities

Amenities	Air Conditioner, Deck
Parking Spaces	2
Parking	Double Garage Attached

Interior

Interior Features	ensuite bathroom
Appliances	Air Conditioning-Central, Dishwasher-Built-In, Garage Control, Garage Opener, Hood Fan, Oven-Microwave, Refrigerator, Stove-Electric, Window Coverings
Heating	Forced Air-1, Natural Gas
Fireplace	Yes
Fireplaces	Glass Door
Stories	3
Has Basement	Yes
Basement	Full, Finished

Exterior

Exterior	Wood, Stone, Vinyl
----------	--------------------

Exterior Features	Park/Reserve, Schools, Shopping Nearby, Treed Lot
Roof	Asphalt Shingles
Construction	Wood, Stone, Vinyl
Foundation	Concrete Perimeter

Additional Information

Date Listed	February 14th, 2025
Days on Market	77
Zoning	Zone 30

DATA IS DEEMED RELIABLE BUT IS NOT GUARANTEED ACCURATE BY THE REALTORS® ASSOCIATION OF EDMONTON. COPYRIGHT 2025 BY THE REALTORS® ASSOCIATION OF EDMONTON. ALL RIGHTS RESERVED.Trademarks are owned or controlled by the Canadian Real Estate Association (CREA) and identify real estate professionals who are members of CREA (REALTOR®, REALTORS®) and/or the quality of services they provide (MLS®, Multiple Listing Service®)

Listing information last updated on May 2nd, 2025 at 2:02am MDT