

Courtesy Of Ian S Fletcher and Chris K Karampelas Of MaxWell Polaris

\$3,190,000 - 9624/9630 74 Avenue, Edmonton

MLS® #E4418603

\$3,190,000

0 Bedroom, 0.00 Bathroom,
Land Commercial on 0.00 Acres

Ritchie, Edmonton, AB

Ritchie .599 acre re-development site with multiple possibilities! Concept plans done for a 34 unit stacked townhouse project on full site. Potential for owner/user or investor to keep the church or renovate into a daycare while developing the second triple lot into a 17 unit multifamily property for additional revenue or sell off.

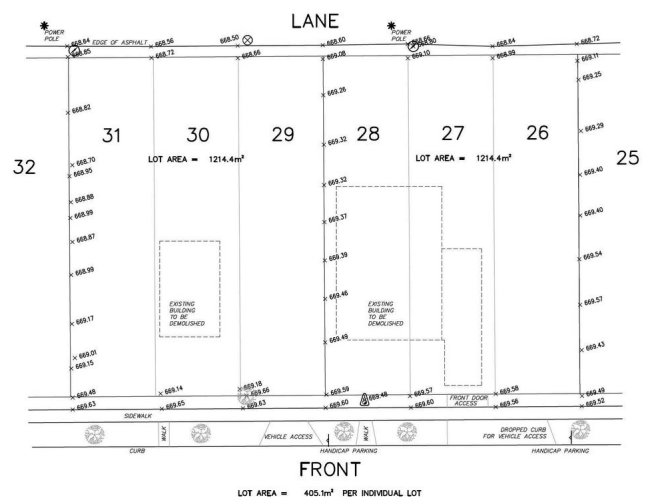
Built in 1954

Essential Information

MLS® #	E4418603
Price	\$3,190,000
Bathrooms	0.00
Acres	0.00
Year Built	1954
Type	Land Commercial
Status	Active

Community Information

Address	9624/9630 74 Avenue
Area	Edmonton
Subdivision	Ritchie
City	Edmonton
County	ALBERTA
Province	AB
Postal Code	T6E 1E6



Exterior

Exterior See Remarks

Construction See Remarks

Additional Information

Date Listed January 20th, 2025

Days on Market 101

Zoning Zone 17

DATA IS DEEMED RELIABLE BUT IS NOT GUARANTEED ACCURATE BY THE REALTORS® ASSOCIATION OF EDMONTON. COPYRIGHT 2025 BY THE REALTORS® ASSOCIATION OF EDMONTON. ALL RIGHTS RESERVED. Trademarks are owned or controlled by the Canadian Real Estate Association (CREA) and identify real estate professionals who are members of CREA (REALTOR®, REALTORS®) and/or the quality of services they provide (MLS®, Multiple Listing Service®)

Listing information last updated on May 1st, 2025 at 10:18am MDT